

**HAND HACKSAW WORK IS ONE OF
THE HARDEST MAINTENANCE JOBS**

Because Ordinary Blades



• **WEAR AND DULL QUICKLY**

• **BIND AND DRAG**

• **SNAP AND SHATTER**

GLOBAL

HAS SOLVED THIS PROBLEMS



GLOBAL INDUSTRIAL PRODUCTS

GLOB - TEC

BI - MET SPECIAL ALLOY HACKSAW BLADES

MAKE ALL HANDSAW JOBS EASIER, FASTER, BETTER



- **CUT 25% FASTER**
 - PRECISELY CONTROLLED TOOTH DESIGN ASSURES FAST STARTS, AND MAXIMUM METAL REMOVAL WITH EACH STROKE
- **BI-MET SPECIAL ALLOY**
 - TOUGH YET FLEXIBLE. BI-MET BLADES LAST FAR LONGER THAN ORDINARY BLADES. CANNOT SHATTER. NO DANGEROUS BLADE SHRAPNEL.

**BI-MET SPECIAL ALLOY BLADES
LAST LONGER, CUT FASTER AND ARE SAFER TO USE**

TEETH/INCH	TO CUT MATERIAL	PART NUMBER	TEETH/INCH	TO CUT MATERIAL	PART NUMBER
10 INCH BLADES			12 INCH BLADES		
18 T	1/4" to 1" thick	M33-241222 (BA)	18 T	1/4" to 1" thick	M33-241230 (BA)
24 T	1/8" to 1/4" thick	M33-241224 (BA)	24 T	1/8" to 1/4" thick	M33-241232 (BA)
32 T	To 1/8" thick	M33-241226 (BA)	32 T	To 1/8" thick	M33-241234 (BA)



GLOBAL INDUSTRIAL PRODUCTS

APPLICATIONS:

- **FASTER EASIER CUTTING OF:**
 - STAINLESS STEEL
 - ALUMINUM
 - CAST IRON
 - TOOL STEEL
 - COPPER
 - BRASS

FEATURES:

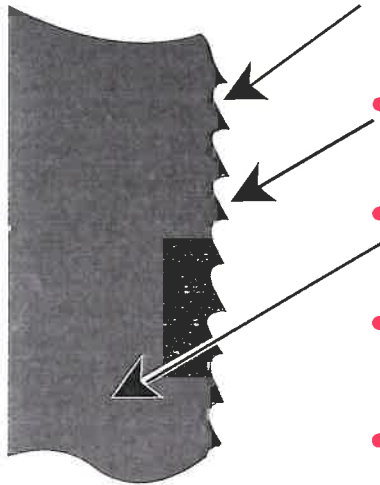
- **FAST EASY STARTS**
- **CUT FASTER WITH LESS EFFORT ON ALL MAINTENANCE MATERIALS**
- **LONGER LASTING - OUTLAST ORDINARY BLADES ON ALL TYPES OF MATERIALS**
- **SAFE - TOUGH, SHATTER-PROOF BLADE**



GLOBAL INDUSTRIAL PRODUCTS

GLOB - TEC

BANDSAW BLADES



- SPECIAL HIGH ALLOY TEETH STAY SHARPER UNDER EXTREME CUTTING CONDITIONS.
- PRECISION MILLED TEETH WITH OPTIMUM HOOK AND RAKE ANGLES CUT FASTER.
- CONSTANT HARD ALLOY BACK FOR GREATER FLEXIBILITY AND LONGER LIFE.
- PRECISION LONG-LIFE WELD FOR GREATER FATIGUE RESISTANCE.
- UNEXCELLED TOUGHNESS DUE TO SPECIALLY ALLOYED STEEL CONTAINING TUNGSTEN, CHROMIUM, VANADIUM, MANGANESE, AND MOLYBDENUM.
- FITS THE FOLLOWING POPULAR BANDSAWS.

PITCH	PART NUMBER
10	M33-241264 (C)
14	M33-241266 (C)
18	M33-241268 (C)

LENGTH 3' 8-7/8" x 1/2" x .020

MANUFACTURER	MODEL NO.
Black & Decker	3120, 3121, 3122, 3123
Greenlee	530
Millers Falls	9954
Milwaukee	6625
Rigid	941, 942, 943
Bockwell	724, 725, 726



GLOBAL INDUSTRIAL PRODUCTS