

GLOBALLOY

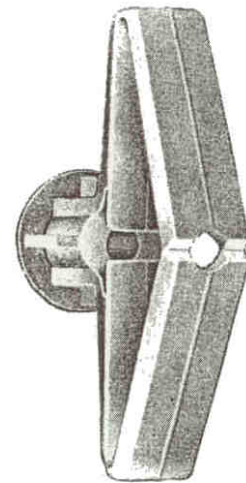
DUAL-ACTION

PLASTIC TOGGLES

“DUAL-ACTION” MEANS GREATER HOLDING POWER

Outperforms ordinary screw anchors because
”Locking Pressure” is applied from two points

- Fast, easy installation
- Cannot overtighten
- One-piece assembly
- Will not rust



<u>PART #</u>		<u>DESCRIPTION</u>	<u>PACK</u>
L11-580240	XS 3/8	GRIP TOGGLER	(FA)
L11-580242	S 1/2	GRIP TOGGLER	(FA)
L11-580244	L 5/8	GRIP TOGGLER	(FA)

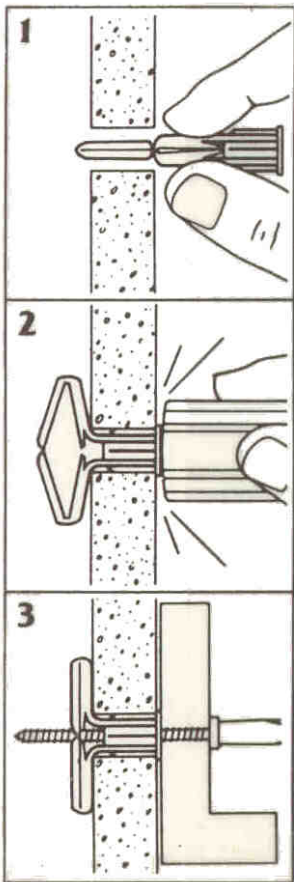


USED IN:

- DRYWALL
- WOOD
- CONCRETE
- PANELING
- MASONRY TILE
- ALMOST ANYWHERE

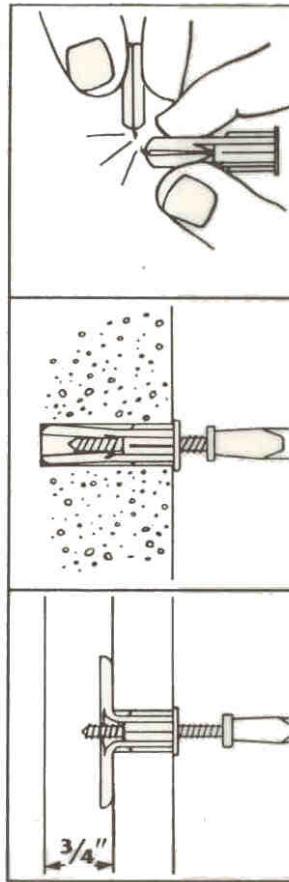
EASY INSTALLATION

HOLLOW WALL APPLICATIONS



1. Drill 5/16" hole, squeeze toggle wings flat and push into hole.
2. Tap flush with wall
3. Put fixture in place, insert screw and tighten until secure.

FOR SHALLOW AND SOLID WALL OR CEILING APPLICATIONS



Squeeze toggle wings flat. Grasp at both ends and bend at middle joint until tip breaks off – then follow our easy installation instructions.

Toggle's unique "pressure flanges" ensure uniform, positive expansion along the entire length of the anchor in solid wall, ceiling or floor applications

. . . . and in shallow wall applications, the "Pressure flanges" apply positive force against the wing tips. This feature gives you superior holding power over other shallow wall anchors.



GLOBAL INDUSTRIAL PRODUCTS