

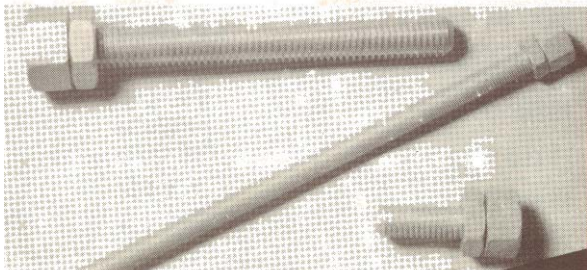
GLOBALLOY THREADED ROD



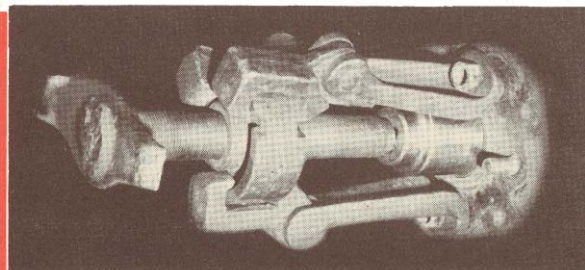
DESIGNED AND ENGINEERED TO REDUCE DOWNTIME AND MAINTENANCE COSTS

- SPECIAL ALLOY STEEL
- Over 145,000 PSI tensile strength in normal temperature application
- Minimum tensile strength of 125,000 PSI in high temperature application to maximum of 1100° F
- Available in 3 foot lengths
- Precision rolled threads for extra strength and fatigue resistance
- **IMPREGNO-PLTD** for maximum protection against rust and corrosion

SAVES TIME — A MAINTENANCE ENGINEERED PRODUCT THAT HAS UNLIMITED USES — SAVES MONEY



MAKE ANY SIZE CAP SCREW
(Use GLOBALLOY Hex Nuts for the head)



High Strength — can pull any housing or bearing without breaking rod or damaging threads



MAKE ANY STUD YOU NEED



The only product to use in high temperature application

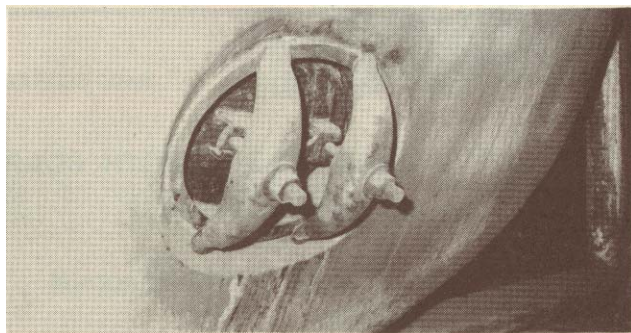


GLOBALLOY THREADED ROD



FOR HIGH TENSILE AND HIGH PRESSURE APPLICATIONS

- Exceeds AMERICAN SOCIETY OF TESTING MATERIALS (ASTM) SPECIFICATION A-193-B7 and AMERICAN SOCIETY OF MECHANICAL ENGINEERS (ASME) BOILER and PRESSURE VESSEL CODE SA193
- Use where extra strength, extra length bolts or studs are required
- Special Alloy Steel for greater resistance to snapping, stripping and stretching
- Precision rolled threads
- **IMPREGNO-PLTD** for maximum protection against rust and corrosion



Typical pressure vessel made to ASME Boiler Code showing stud application in sealed door

USS - Coarse Threads

PART #	DESCRIPTION	PACK
T20-341830	1/4 -20X36 GLOBALLOY THD.RD.IM	(D)
T20-341832	5/16-18X36 GLOBALLOY THD.RD.IM	(D)
T20-341834	3/8 -16X36 GLOBALLOY THD.RD.IM	(D)
T20-341836	7/16-14X36 GLOBALLOY THD.RD.IM	(D)
T20-341840	1/2 -13X36 GLOBALLOY THD.RD.IM	(C)
T20-341842	9/16-12X36 GLOBALLOY THD.RD.IM	(C)
T20-341844	5/8 -11X36 GLOBALLOY THD.RD.IM	(C)
T20-341846	3/4 -10X36 GLOBALLOY THD.RD.IM	(B)
T20-341848	7/8 - 9X36 GLOBALLOY THD.RD.IM	(B)
T20-341850	1" - 8X36 GLOBALLOY THD.RD.IM	(B)

SAE - Fine Threads

PART #	DESCRIPTION	PACK
T25-341852	1/4 -28X36 GLOBALLOY THD.RD.IM	(D)
T25-341854	5/16-24X36 GLOBALLOY THD.RD.IM	(D)
T25-341856	3/8 -24X36 GLOBALLOY THD.RD.IM	(D)
T25-341858	7/16-20X36 GLOBALLOY THD.RD.IM	(D)
T25-341860	1/2 -20X36 GLOBALLOY THD.RD.IM	(C)
T25-341862	9/16-18X36 GLOBALLOY THD.RD.IM	(C)
T25-341864	5/8 -18X36 GLOBALLOY THD.RD.IM	(C)
T25-341866	3/4 -16X36 GLOBALLOY THD.RD.IM	(B)
T25-341868	7/8 -14X36 GLOBALLOY THD.RD.IM	(B)
T25-341870	1" -14X36 GLOBALLOY THD.RD.IM	(B)

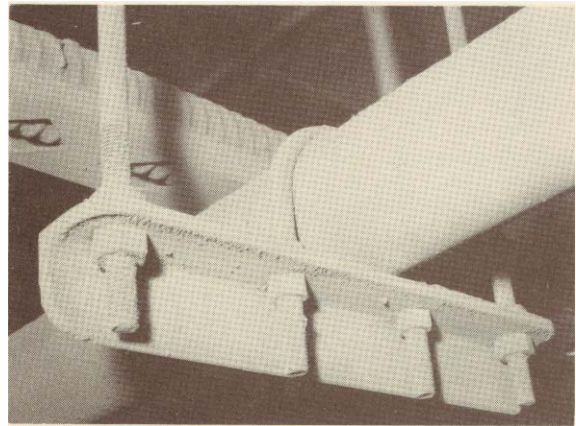


GLOBAL THREADED ROD



**AVAILABLE IN COARSE (USS) AND FINE (SAE)
36 INCH LENGTHS**

- Precision rolled threads for finest fit
- Greater resistance to shearing
- Quality controlled for easy forming and bending
- IMPREGNO-PLTD for maximum protection against rust and corrosion



Hundreds of uses as supports, brackets, U-bolts, extensions, eye bolts, braces, toggle bolts, hangers ...

PART #	DESCRIPTION	PACK
T30-545916	6-32 X36 GLOB.THR RD.USS IMP	(F)
T30-545918	8-32 X36 GLOB.THR.RD.USS IMP	(F)
T30-545920	10-24 X36 GLOB.THR.RD.USS IMP	(F)
T30-545922	1/4-20 X36 GLOB.THR.RD.USS IMP	(F)
T30-545924	5/16-18X36 GLOB.THR.RD.USS IMP	(F)
T30-545926	3/8-16 X36 GLOB.THR.RD.USS IMP	(F)
T30-545928	7/16-14X36 GLOB.THR.RD.USS IMP	(E)
T30-545930	1/2-13 X36 GLOB.THR.RD.USS IMP	(E)
T30-545932	9/16-12X36 GLOB.THR.RD.USS IMP	(C)
T30-545934	5/8-11 X36 GLOB.THD.RD.USS IMP	(C)
T30-545936	3/4-10 X36 GLOB.THD.RD.USS IMP	(B)
T30-545938	7/8- 9 X36 GLOB.THR.RD.USS IMP	(B)
T30-545940	1"- 8 X36 GLOB.THR.RD.USS IMP	(B)

PART #	DESCRIPTION	PACK
T35-545942	10-32 X36 GLOB.THR RD.SAE IMP	(F)
T35-545944	1/4 -28X36 GLOB.THR RD.SAE IMP	(F)
T35-545946	5/16-24X36 GLOB.THR RD.SAE IMP	(F)
T35-545948	3/8 -24X36 GLOB.THR RD.SAE IMP	(F)
T35-545950	7/16-20X36 GLOB.THR RD.SAE IMP	(E)
T35-545952	1/2 -20X36 GLOB.THR RD.SAE IMP	(E)
T35-545954	9/16-18X36 GLOB.THR RD.SAE IMP	(C)
T35-545956	5/8 -18X36 GLOB.THR RD.SAE IMP	(C)
T35-545958	3/4 -16X36 GLOB.THR RD.SAE IMP	(B)
T35-545960	7/8 -14X36 GLOB.THD RD.SAE IMP	(B)
T35-545962	1" -14X36 GLOB.THD RD.SAE IMP	(B)



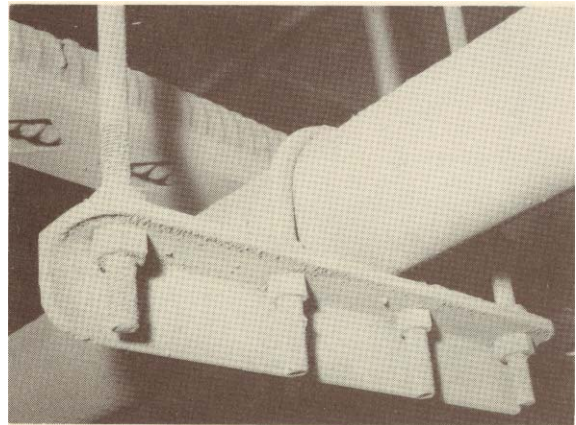
GLOBAL INDUSTRIAL PRODUCTS

GLOBAL THREADED ROD



6 FOOT LENGTHS

- Precision rolled threads for finest fit
- Greater resistance to shearing
- Quality controlled for easy forming and bending
- IMPREGNO-PLTD for maximum protection against rust and corrosion



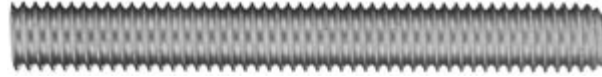
Hundreds of uses as supports, brackets, U-bolts, extensions, eye bolts, braces, toggle bolts, hangers ...

PART #	DESCRIPTION	PACK
T31-555250	1/4 -20 X 6' GLOB.THR. ROD IMP	(B)
T31-555312	5/16-18 X 6' GLOB.THR. ROD IMP	(B)
T31-555375	3/8 -16 X 6' GLOB.THR. ROD IMP	(B)
T31-555438	7/16-14 X 6' GLOB.THR. ROD IMP	(B)
T31-555500	1/2 -13 X 6' GLOB.THR. ROD IMP	(B)
T31-555625	5/8 -11 X 6' GLOB.THR. ROD IMP	(B)
T31-555750	3/4 -10 X 6' GLOB.THR. ROD IMP	(B)
T31-555875	7/8 - 9 X 6' GLOB.THR. ROD IMP	(B)
T31-555990	1" - 8 X 6' GLOB.THR. ROD IMP	(B)



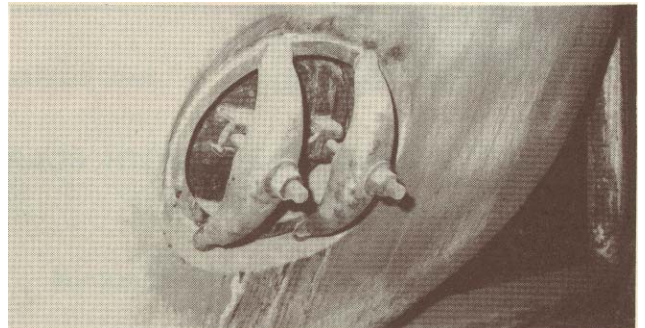
GLOBAL INDUSTRIAL PRODUCTS

GLOBALLOY METRIC THREADED ROD



FOR HIGH TENSILE AND HIGH PRESSURE APPLICATIONS

- Exceeds AMERICAN SOCIETY OF TESTING MATERIALS (ASTM) SPECIFICATION A-193-B7 and AMERICAN SOCIETY OF MECHANICAL ENGINEERS (ASME) BOILER and PRESSURE VESSEL CODE SA193
- Use where extra strength, extra length bolts or studs are required
- Over 145,000 PSI tensile strength in normal temperature application
- Precision rolled threads
- 4140 ALLOY STEEL
- MEETS DIN 975 SPECIFICATIONS



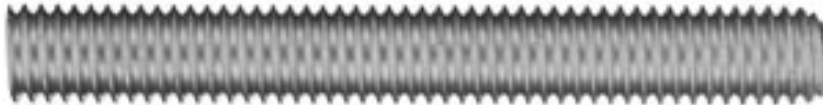
Typical pressure vessel made to ASME Boiler Code showing stud application in sealed door

<u>PART #</u>	<u>DESCRIPTION</u>	<u>PACK</u>
T27-560060	6MM X 1M ALLOY MET. THR ROD	(B)
T27-560080	8MM X 1M ALLOY MET. THR ROD	(B)
T27-560100	10MM X 1M ALLOY MET. THR ROD	(B)
T27-560120	12MM X 1M ALLOY MET. THR ROD	(B)
T27-560160	16MM X 1M ALLOY MET. THR ROD	(B)
T27-560200	20MM X 1M ALLOY MET. THR ROD	(B)
T27-560240	24MM X 1M ALLOY MET. THR ROD	(B)



GLOBONEL XX

316 STAINLESS THREADED ROD



- EXTREME CORROSION RESISTANCE
- RESIST SALT AND OTHER CORROSIVE ELEMENTS
- TENSILE STRENGTH 125,000 to 145,000 PSI
- STAINLESS STEEL 316
- AVAILABLE IN 3 FOOT LENGTHS
- CLEAN — BURR FREE FULL FINISHED THREADS
- COLD FORMED FOR MAXIMUM STRENGTH

SAVES TIME — A MAINTENANCE ENGINEERED PRODUCT THAT
HAS UNLIMITED USES — SAVES MONEY

<u>PART #</u>	<u>DESCRIPTION</u>	<u>PACK</u>
T28-525236	6/32 X 36 GLOBONEL XX THR ROD	(D)
T28-525238	8/32 X 36 GLOBONEL XX THR ROD	(D)
T28-525240	10/24 X 36 GLOBONEL XX THR ROD	(D)
T28-525242	10/32 X 36 GLOBONEL XX THR ROD	(D)
T28-525244	1/4-20X 36 GLOBONEL XX THR ROD	(D)
T28-525246	5/16-18X36 GLOBONEL XX THR ROD	(D)
T28-525248	3/8-16X 36 GLOBONEL XX THR ROD	(C)
T28-525249	7/16-14X36 GLOBONEL XX THR ROD	(C)
T28-525250	1/2-13X 36 GLOBONEL XX THR ROD	(C)
T28-525252	5/8-11X 36 GLOBONEL XX THR ROD	(B)
T28-525254	3/4-10X 36 GLOBONEL XX THR ROD	(B)
T28-525255	7/8-11X 36 GLOBONEL XX THR ROD	(B)
T28-525256	1"-8 X 36 GLOBONEL XX THR ROD	(B)

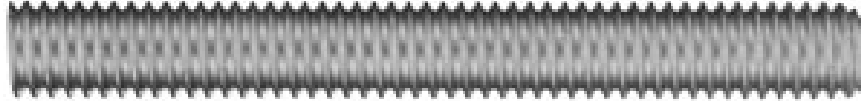


GLOBAL INDUSTRIAL PRODUCTS

THREADED ROD

GLOBONEL

STAINLESS THREADED ROD



USE WHERE EXTRA LENGTH BOLTS OR STUDS ARE REQUIRED

- CORROSION RESISTANCE
- 18-8 STAINLESS STEEL
- AVAILABLE IN 3 FOOT LENGTHS
- PRECISION ROLLED THREADS

<u>PART #</u>	<u>DESCRIPTION</u>	<u>PACK</u>
T29-236202	6/32 X 3' THREADED ROD 18-8	(D)
T29-236204	8/32 X 3' THREADED ROD 18-8	(D)
T29-236206	10/24 X 3' THREADED ROD 18-8	(D)
T29-236208	10/32 X 3' THREADED ROD 18-8	(D)
T29-236210	1/4-20 X 3' THREADED ROD 18-8	(D)
T29-236212	5/16-18 X 3' THREADED ROD 18-8	(D)
T29-236214	3/8-16 X 3' THREADED ROD 18-8	(C)
T29-236216	7/16-14 X 3' THREADED ROD 18-8	(C)
T29-236218	1/2-13 X 3' THREADED ROD 18-8	(C)
T29-236220	5/8-11 X 3' THREADED ROD 18-8	(B)
T29-236222	3/4-10 X 3' THREADED ROD 18-8	(B)
T29-236224	7/8- 9 X 3' THREADED ROD 18-8	(B)
T29-236226	1-8 X 3' THREADED ROD 18-8	(B)



GLOBAL INDUSTRIAL PRODUCTS

GLOBAL UNTHREADED ROD



- Quality controlled for easy forming and bending
- Low carbon steel
- 3 foot long
- Easily cut, drilled, tapped welded and threaded
- IMPREGNO-PLTD for maximum protection against rust and corrosion



PART #	DESCRIPTION	PACK
T37-281220	1/8 X 36 GLOB. UNTHRD ROD IMP	(F)
T37-281225	3/16 X 36 GLOB. UNTHRD ROD IMP	(F)
T37-281230	1/4 X 36 GLOB. UNTHRD ROD IMP	(F)
T37-281235	5/16 X 36 GLOB. UNTHRD ROD IMP	(F)
T37-281240	3/8 X 36 GLOB. UNTHRD ROD IMP	(F)
T37-281250	7/16 X 36 GLOB. UNTHRD ROD IMP	(D)
T37-281255	1/2 X 36 GLOB. UNTHRD ROD IMP	(D)
T37-281260	9/16 X 36 GLOB. UNTHRD ROD IMP	(C)
T37-281265	5/8 X 36 GLOB. UNTHRD ROD IMP	(C)
T37-281270	3/4 X 36 GLOB. UNTHRD ROD IMP	(B)
T37-281275	7/8 X 36 GLOB. UNTHRD ROD IMP	(B)
T37-281280	1" X 36 GLOB. UNTHRD ROD IMP	(B)

Used for:

- Linkage rods
- Shafts
- Locking Pins
- Anchor Bolts
- J-bolts
- U-bolts
- Hook Bolts
- Eye Bolts
- Control rods
- Push Rods
- Etc.

