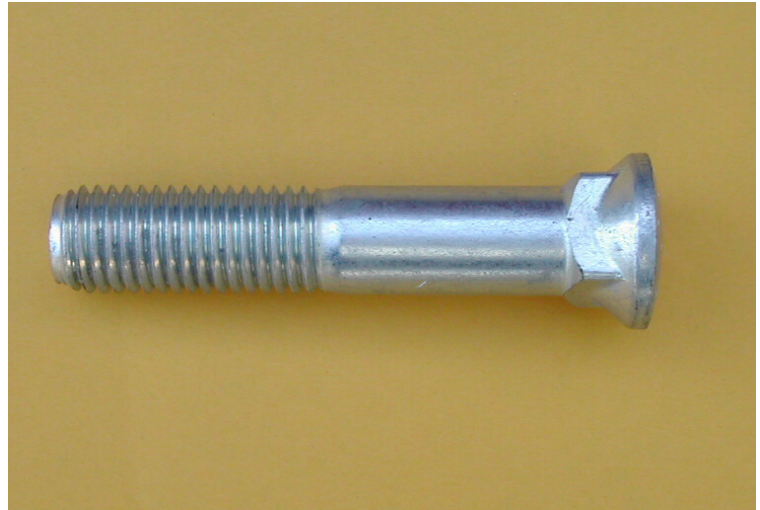


BOLTS

PLOW BOLTS – GRADE 5 Impregno-Plated

- Meets ANSI B18.9 dimensional specifications
- #3 head
- UNC – 2A thread
- Heat treated to Rockwell C 25-34
- Flat head
- IMPREGNO-PLTD for maximum protection against rust and corrosion



B40-296125	3/8 X 1-1/4 GD5 PLOW BOLT IMP	(BAA)
B40-296150	3/8 X 1-1/2 GD5 PLOW BOLT IMP	(BAA)
B40-296175	3/8 X 1-3/4 GD5 PLOW BOLT IMP	(BAA)
B40-296200	3/8 X 2" GD5 PLOW BOLT IMP	(BAA)
B40-296225	3/8 X 2-1/4 GD5 PLOW BOLT IMP	(BAA)
B40-296250	3/8 X 2-1/2 GD5 PLOW BOLT IMP	(BAA)
B40-297125	7/16 X 1-1/4 GD5 PLOW BOLT IMP	(BAA)
B40-297150	7/16 X 1-1/2 GD5 PLOW BOLT IMP	(BAA)
B40-297175	7/16 X 1-3/4 GD5 PLOW BOLT IMP	(BAA)
B40-297200	7/16 X 2" GD5 PLOW BOLT IMP	(BAA)
B40-297225	7/16 X 2-1/4 GD5 PLOW BOLT IMP	(FA)
B40-297250	7/16 X 2-1/2 GD5 PLOW BOLT IMP	(FA)
B40-297300	7/16 X 3" GD5 PLOW BOLT IMP	(FA)
B40-298125	1/2 X 1-1/4 GD5 PLOW BOLT IMP	(FA)
B40-298150	1/2 X 1-1/2 GD5 PLOW BOLT IMP	(FA)
B40-298175	1/2 X 1-3/4 GD5 PLOW BOLT IMP	(FA)
B40-298200	1/2 X 2" GD5 PLOW BOLT IMP	(FA)
B40-298225	1/2 X 2-1/4 GD5 PLOW BOLT IMP	(FA)
B40-298250	1/2 X 2-1/2 GD5 PLOW BOLT IMP	(FA)
B40-298300	1/2 X 3" GD5 PLOW BOLT IMP	(FA)



GLOBAL INDUSTRIAL PRODUCTS